

PSAT/NMSQT®

CollegeBoard / NATIONAL MERIT SCHOLARSHIP CORPORATION

Prepare for the PSAT/NMSQT®

Preliminary SAT/National Merit Scholarship
Qualifying Test





3.8+ million

students take the PSAT/NMSQT each year to get feedback on their skills, qualify for scholarships, and practice for the SAT.

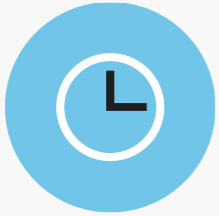
Key Facts

The Preliminary SAT/National Merit Scholarship Qualifying Test (PSAT/NMSQT[®]) assesses the same knowledge and skills as the SAT[®], providing a check-in on college readiness before you take the SAT.

The PSAT/NMSQT also:

- Propels students toward college and career readiness.
- Is the qualifying test for entry to the National Merit[®] Scholarship Program. *11th grade only

What to know about the PSAT/NMSQT



Test length:
2 hours, 45 minutes



No points deducted
for incorrect answers
or unanswered
questions (also called
“rights-only” scoring)



Free, personalized
SAT practice through
Khan Academy® with
students’ own
PSAT/NMSQT scores

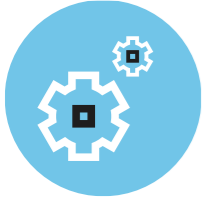


Scale range is
320–1520 for the
total score

Benefits of the PSAT/NMSQT



Free, personalized SAT practice on Khan Academy based on students' PSAT/NMSQT answers



Aligned to the SAT. Historically, students who took the PSAT/NMSQT scored higher on the SAT, on average, than students who didn't take the test.



Entry to the National Merit Scholarship Program and increased access to additional scholarship providers for 11th Grade and beyond

2

When Is the PSAT/NMSQT?

**Wednesday October 13th
7:25 a.m. to 11:20 a.m.**



Reading Test

- 5 passages
- 47 passage-based questions;
60 minutes
- In the Reading Test, students will encounter questions like those asked in a lively, thoughtful, **evidence-based** discussion.

Quick Facts

- All questions are multiple choice and based on passages.
- Some passages are paired with other passages or informational graphics such as graphs and tables.
- Topic-specific prior knowledge is never tested.

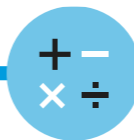


Writing and Language Test

- 4 passages
- 44 passage-based questions;
35 minutes
- The Writing and Language Test puts students in the active role of an editor who is improving a written passage. Most questions ask students to decide which, if any, of the alternatives to an underlined portion of a passage most improves it.

Quick Facts

- All questions are multiple choice and based on passages.
- Some passages are paired with informational graphics such as graphs and tables.
- Topic-specific prior knowledge is never tested.



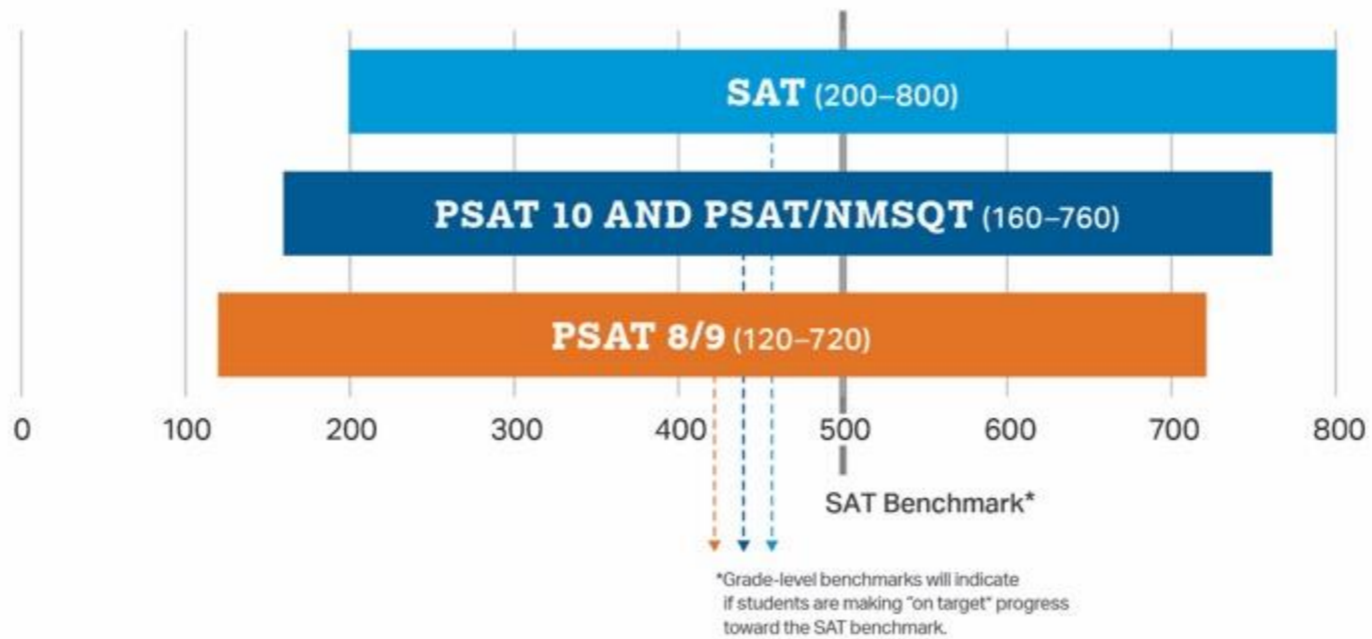
Math Test

- 2 test sections; 70 minutes
- 48 questions (40 multiple choice, 8 student-produced responses)
- The Math Test focuses on the math that matters most for college and career readiness. To succeed on the Math Test, students will need to demonstrate mathematical practices, such as problem solving and using appropriate tools strategically.

Quick Facts

- Most math questions will be multiple choice, but some will be student-produced responses.
- The Math Test is divided into 2 portions:
Math Test – No Calculator
and Math Test – Calculator.
- Some parts of the test will present a scenario and then ask several questions about it.

How Does the PSAT/NMSQT Connect to the SAT?

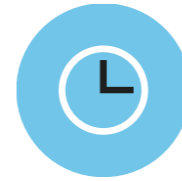


The score students get on the PSAT/NMSQT is the same score they would have gotten on the SAT if they'd taken it on the same day.

How Does the PSAT/NMSQT Compare to the SAT?

PSAT/NMSQT

SAT



Time

2 hours, 45 minutes

3 hours, 50 minutes



**Section Score
Range**

160–760

200–800

Know How the PSAT/NMSQT Is Scored

Rights-Only Scoring

- 1 point for each correct answer
- No points deducted for incorrect answers or unanswered questions

Math Student-Produced Responses

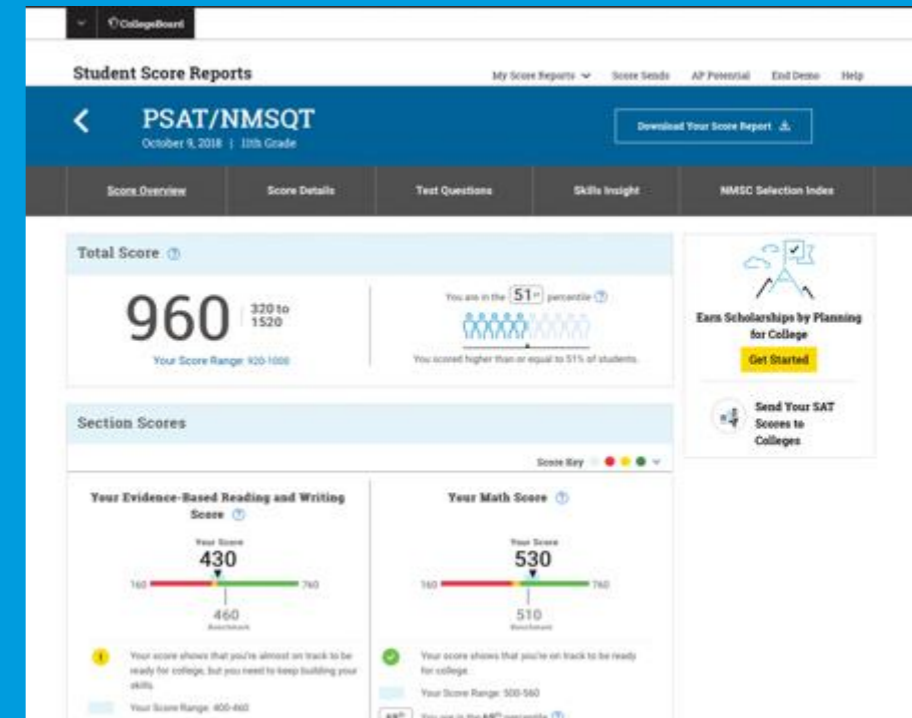
- Enter answers as (reduced) fractions or decimals.
- If rounding a decimal, make sure to enter as many characters as are allowed.



Personalized Skills Information

The PSAT/NMSQT Score Report

- Contains information to help students improve academic skills.
- Lists skills that students have the best chance of improving with additional work.
- Connects to free, personalized practice recommendations on Khan Academy.



Preparation Starts in School

Read

Continuous reading improves vocabulary and develops essential skills.

Take Challenging Courses

This helps students develop and strengthen their critical thinking skills.





Reading Test

Passage-Based Questions

Passage Excerpt:

[. . .] The coming decades will likely see more intense clustering of jobs, innovation, and productivity in a smaller number of bigger cities and city-regions. Some regions could end up bloated beyond the capacity of their infrastructure, while others struggle, their promise stymied by inadequate human or other resources.

*Adapted from Richard Florida, *The Great Reset*.*

© 2010 by Richard Florida.

As used in line 2, “intense” most nearly means

- (A) emotional.
- (B) concentrated.
- (C) brilliant.
- (D) determined.



Reading Test

Passage-Based Questions

Passage Excerpt:

[. . .] The coming decades will likely see more intense clustering of jobs, innovation, and productivity in a smaller number of bigger cities and city-regions. Some regions could end up bloated beyond the capacity of their infrastructure, while others struggle, their promise stymied by inadequate human or other resources.

*Adapted from Richard Florida, *The Great Reset*.*

© 2010 by Richard Florida.

As used in line 2, “intense” most nearly means

- (A) emotional.
- (B) concentrated.**
- (C) brilliant.
- (D) determined.

Writing and Language Test

Passage-Based Questions



Passage Excerpt:

[. . .] As Kingman developed as a painter, his works were often compared to paintings by Chinese landscape artists dating back to CE 960, a time when a strong tradition of landscape painting emerged in Chinese art. Kingman, however, **5** vacated from that tradition in a number of ways, most notably in that he chose to focus not on natural landscapes, such as mountains and rivers, but on cities. [. . .]

5

- (A) NO CHANGE
- (B) evacuated
- (C) departed
- (D) retired

Writing and Language Test

Passage-Based Questions



Passage Excerpt:

[. . .] As Kingman developed as a painter, his works were often compared to paintings by Chinese landscape artists dating back to CE 960, a time when a strong tradition of landscape painting emerged in Chinese art. Kingman, however, **5** vacated from that tradition in a number of ways, most notably in that he chose to focus not on natural landscapes, such as mountains and rivers, but on cities. [. . .]

5

- (A) NO CHANGE
- (B) evacuated
- (C) departed**
- (D) retired

Math Test

Calculator: Not Permitted



In this equation, what is the value of k ?

$$\frac{5(k+2)-7}{6} = \frac{13-(4-k)}{9}$$

- (A) $\frac{9}{17}$
- (B) $\frac{9}{13}$
- (C) $\frac{33}{17}$
- (D) $\frac{33}{13}$



Math Test

Calculator: Not Permitted

In this equation, what is the value of k ?

$$\frac{5(k+2)-7}{6} = \frac{13-(4-k)}{9}$$

In this problem, students will demonstrate their fluency in solving equations in one variable.

Choice B is correct. Simplifying the numerators yields

$$\frac{5k+3}{6} = \frac{9+k}{9}$$

and cross-multiplication gives $45k + 27 = 54 + 6k$.

Solving for k yields $k = \frac{9}{13}$

(A) $\frac{9}{7}$

(B) $\frac{9}{13}$

(C) $\frac{33}{17}$

(D) $\frac{33}{13}$

Math Section

Student-Produced Responses



Sample Grids

Instead of choosing a correct answer from a list of options, students will need to solve problems and enter their answers in the grids provided on the answer sheet.

Answer: $\frac{7}{12}$

Write answer in boxes. →

7	/	1	2
0	0	0	0
1	1	1	1
2	2	2	2
3	3	3	3
4	4	4	4
5	5	5	5
6	6	6	6
7	7	7	7
8	8	8	8
9	9	9	9

← Fraction line

Grid in result.

Answer: 2.5

2	.	5
0	0	0
1	1	1
2	2	2
3	3	3
4	4	4
5	5	5
6	6	6
7	7	7
8	8	8
9	9	9

← Decimal point

Acceptable ways to grid $\frac{2}{3}$ are:

2	/	3
0	0	0
1	1	1
2	2	2
3	3	3
4	4	4
5	5	5
6	6	6
7	7	7
8	8	8
9	9	9

.	6	6	6
0	0	0	0
1	1	1	1
2	2	2	2
3	3	3	3
4	4	4	4
5	5	5	5
6	6	6	6
7	7	7	7
8	8	8	8
9	9	9	9

.	6	6	7
0	0	0	0
1	1	1	1
2	2	2	2
3	3	3	3
4	4	4	4
5	5	5	5
6	6	6	6
7	7	7	7
8	8	8	8
9	9	9	9

Answer: 201– either position is correct

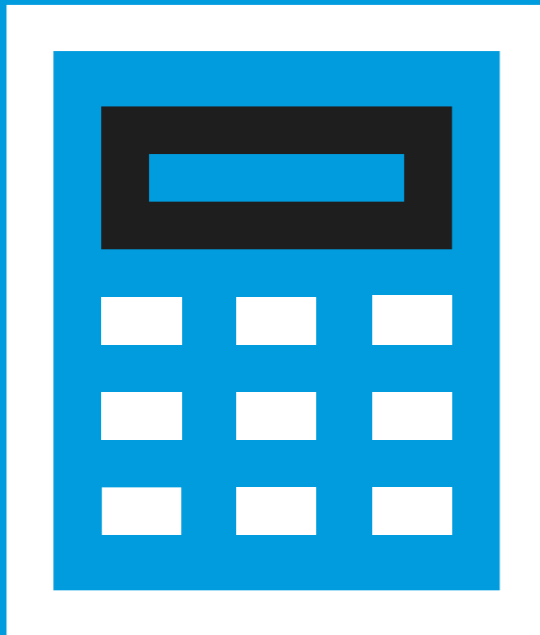
2	0	1
0	0	0
1	1	1
2	2	2
3	3	3
4	4	4
5	5	5
6	6	6
7	7	7
8	8	8
9	9	9

2	0	1
0	0	0
1	1	1
2	2	2
3	3	3
4	4	4
5	5	5
6	6	6
7	7	7
8	8	8
9	9	9

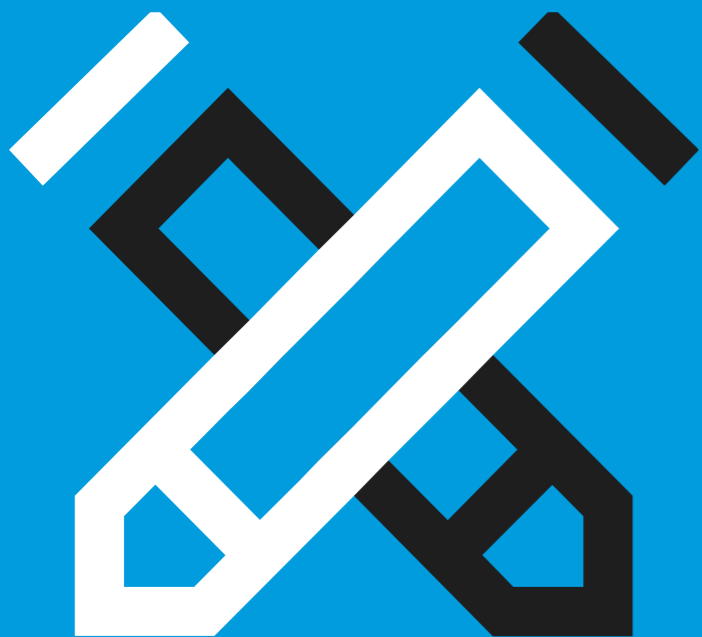
NOTE: You may start your answers in any column, space permitting. Columns you don't need to use should be left blank.



Math Section



- A scientific or graphing calculator is recommended.
- Students should bring a familiar calculator. Test day is not the time to figure out how to use a new calculator.
- Don't try to use your calculator on every question—no question requires one.
- Make sure your calculator is in good working order with fresh batteries.
- Students will not be permitted to use laptops or other computers, tablets, cell phones or smartphones, etc. Please reference the student guide for a complete list of prohibited items.



You are already signed up.

On 10/13/21, come to school on time, with a calculator and a small drink/snack.

Your testing location will be listed on large signs around the school.

You will have lunch/class after the test. School Counselors will help you access/interpret your scores in a few months.

Resources

For free, personalized resources aligned to the SAT Suite, visit khanacademy.org/sat

Take a PSAT/NMSQT practice test in the *PSAT/NMSQT Student Guide*, available from your counselor or at collegeboard.org/psatpractice

The screenshot shows the Khan Academy website with a blue header. The main content area has a light blue background with a grid pattern and a pencil icon. A large white box contains the text "Maximize your score with Official SAT® Practice" and a blue "Let's go" button. Below this, there are four icons representing features: a personalized plan, official tests, interactive content, and instant feedback.

Personalized for you
We'll create a tailored practice plan for you based on a diagnostic or your SAT or PSAT/NMSQT® scores

Official
8 full-length, real practice tests and content created in partnership with College Board

Interactive
Thousands of practice questions, videos, lessons, and hints plus study and test-taking tips and strategies

Instant
Get constant feedback and progress so you know where you stand

The screenshot shows the CollegeBoard website with a blue header. The main content area has a blue background with the text "Practice Tests". Below this, there are several sections: "PSAT/NMSQT and PSAT 10", "Inside the Test", "Taking the Tests", "Practice", "Sample Questions", "Scores", and "Scholarships and Recognition".

PSAT/NMSQT and PSAT 10
Simulate test day by printing and taking an official PSAT/NMSQT or PSAT 10 practice test.

Inside the Test
After you've finished, score your test using the resources below.

Taking the Tests
Practice

Before You Start
You'll need a printer, pencil, calculator, and timer. Here are some tips:

- Mark your answers in the correct row of circles on the answer sheet. Be especially careful if you skip questions.
- It's okay to guess. You won't lose any points if you're wrong.
- [Learn how to enter your answers on math grid-ins.](#)

Scores
If you're using a screen reader or other assistive technology, we recommend using the [Microsoft Word practice tests](#) optimized for you. If you prefer, you

Resources

Read the full *PSAT/NMSQT Student Guide* for details about the test and the National Merit Scholarship Program (11th grade).

